

WLAN Network Solution





Wi-Tek
Communication Solution

What's Inside

■ Project Management ■ Device Management ■ Network Optimization

- Unlimited number of project creation
- Auto project network topology generation
- Real-time network data analysis
- Project share/ handover
- My project map
- Project report

- Device status overview
- ONVIF devices (IP Camera) management
- Remote device configuration
- One-key Batch device online upgrade
- Device fault alarm
- SD-LAN network

- Wi-Fi configuration
- Wi-Fi optimization
- Roaming optimization



Create New Project is Easy As 1-2-3

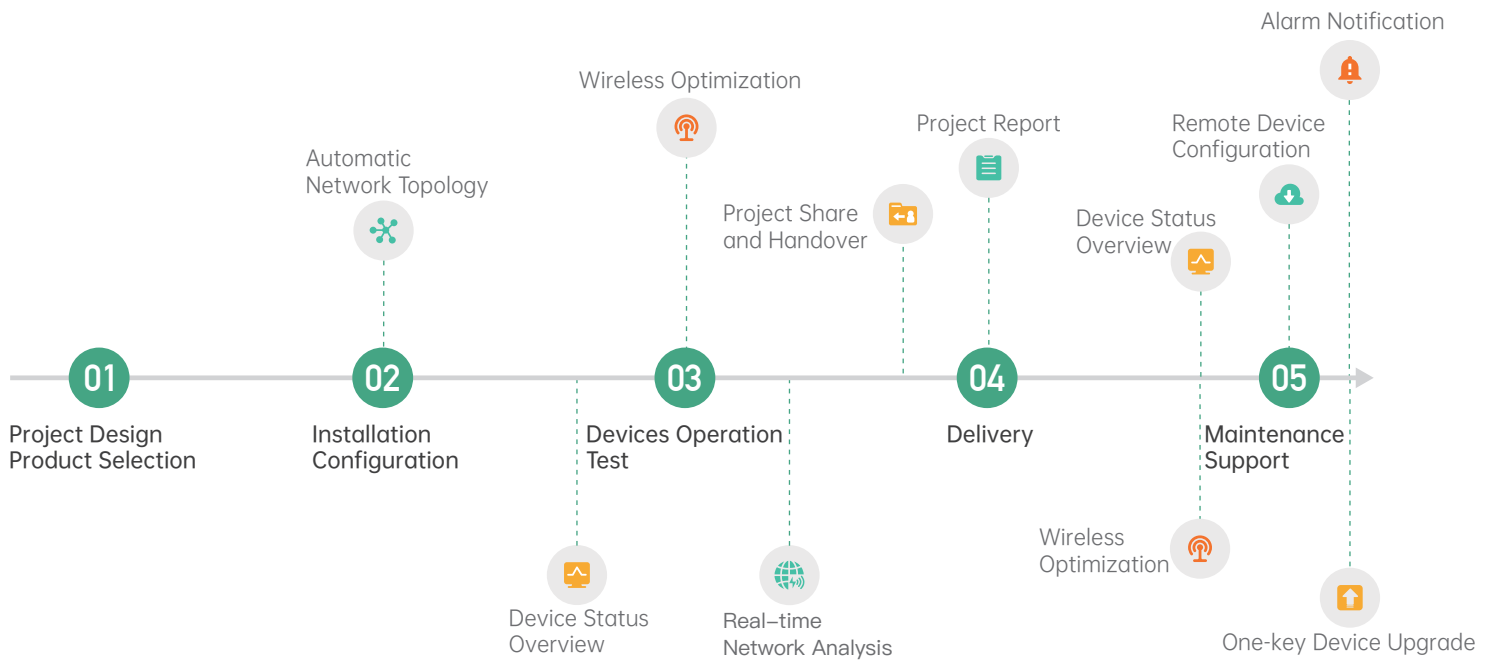
Creating a project and adding devices need only 3 steps. Automatic network topology generation, automatic detect and record Wi-Tek cloud and ONVIF smart devices' information, make configuration is faster and easier than ever.



▶ Projects are all in your grasp!

Wi-Tek developed the Cloud platform and mobile APP aimed at better supporting and serving project-oriented customers to provide easy and efficient multi-project management and multi-device management tool for free.

How does Wi-Tek cloud help you?



All businesses are easy to control

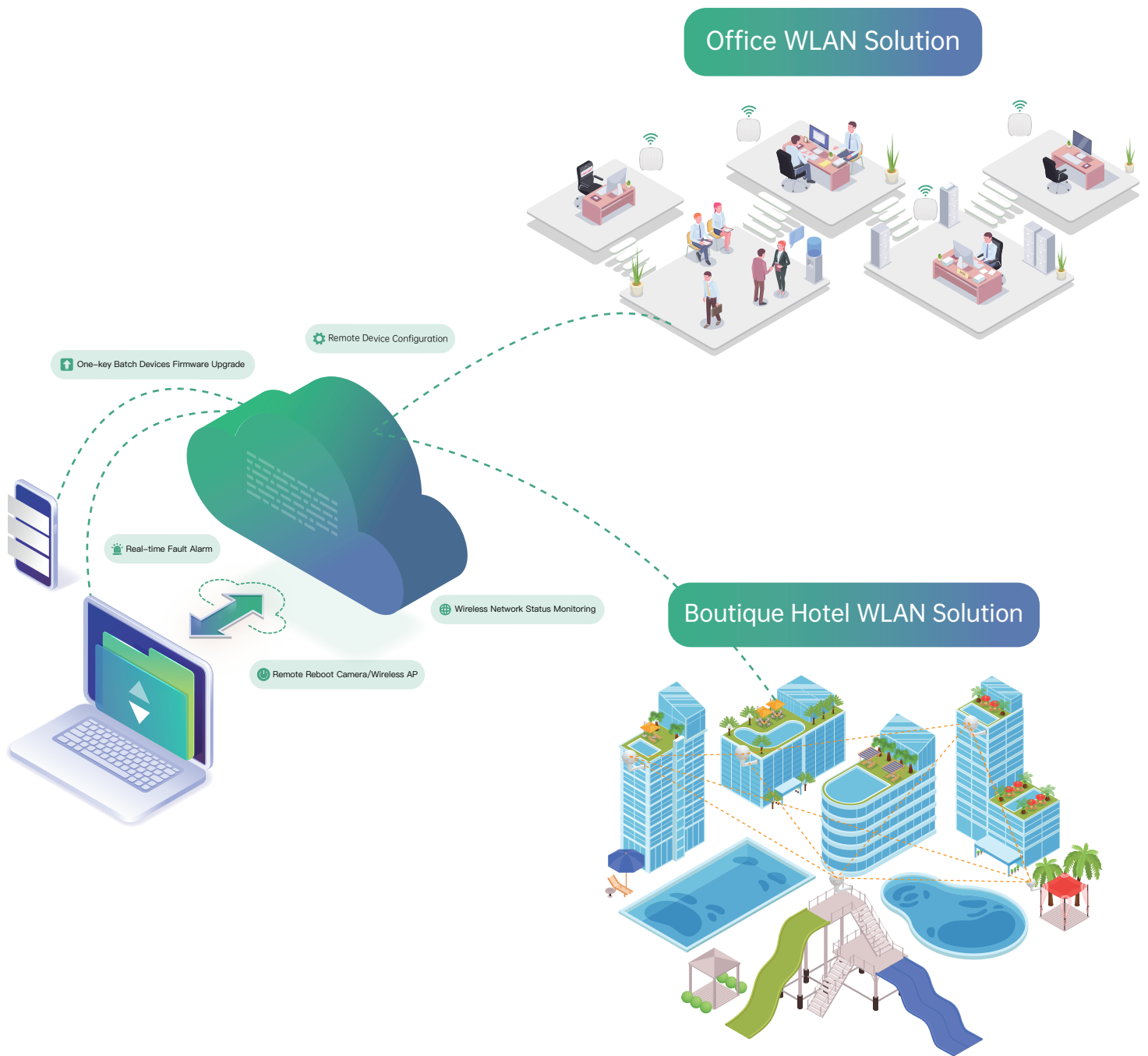
Unlimited number of project creation, view all the project in map or list mode. Click to check the network status and access to the device details of project. Multiple project management easier than ever.

Grow your revenue

One-step sharing/ handover of the project and report provides a convenient maintenance transfer method of project delivery, makes maintenance more efficient, and better support your customer.



► Wi-Tek Cloud Solution



■ We Recommend ■

Office WLAN Solution

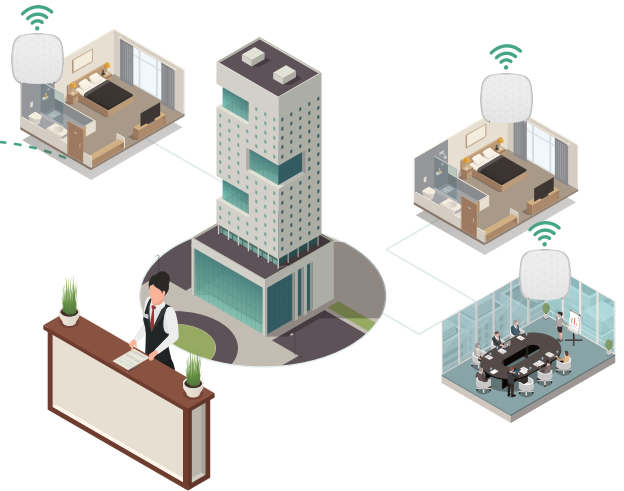
- Cloud L2 Managed Switch
- Cloud Gateway with Multi-Gigabit Ports
- Wireless Access Point

Boutique Hotel WLAN Solution

- Cloud L2 Managed Switch
- Cloud Gateway with Multi-Gigabit Ports
- Wireless Access Point
- Wireless Mesh Access Point and Router

► Wi-Tek On-site Solution

Economic Hotel WLAN Solution



WISP Solution



■ We Recommend ■

Economic Hotel WLAN Solution

- Wireless Access Point
- Wireless Access Point Hardware Controller
- Multi-Gigabit Ethernet

WISP Solution

- Alien Series 24/48V WISP PoE Switch
- UPS No-Break Solar PoE Switch
- 300Mbps LTE 4G Wireless Router

▶ Cloud L2 Managed Switch

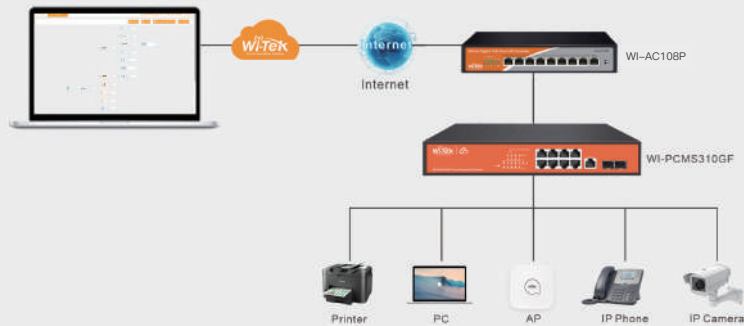


Cloud L2 Managed PoE Switch series of managed switches are switches tailored for SME customer applications, which can meet the different levels of network access needs of SME customers. Covering basic VLAN division and advanced security features such as ACL, etc. can meet the PoE power supply requirements of wireless APs, digital cameras, and other devices on various occasions.

 Cloud Management

 Discovery ONVIF IP camera

 Support fault alarm notification



Model	WI-PCMS310GF	WI-PCMS328GF	WI-CGS5018	WI-CGS5026
Interface	8*1000Mbps RJ45 Ports 2*Gigabit SFP Slots 1*Console Port	24*1000Mbps RJ45 Ports 2*Gigabit Combo ports 2*Gigabit SFP Slots 1*Console Port	10*1000Mbps SFP Slots 8*1000Mbps RJ45 Ports 1*Console Port	18*1000Mbps SFP Slots 8*1000Mbps RJ45 Ports 1*Console Port
PoE Standard	802.3af/at	802.3af/at	/	/
PoE Ports	8	24	/	/
PoE Power Budget	140W	370W	/	/
Switching Capacity	20Gbps	56Gbps	36Gbps	52Gbps
Packet Forwarding Rate	14.88Mpps	41.66Mpps	26.78Mpps	38.69Mpps
MAC Address Table	8K	8K	8K	8K
Jumbo Frame	9KB	9KB	10 KB	10 KB
Operating Temperature	0°C to 40°C			

▶ Cloud Gateway with Multi-Gigabit Ports

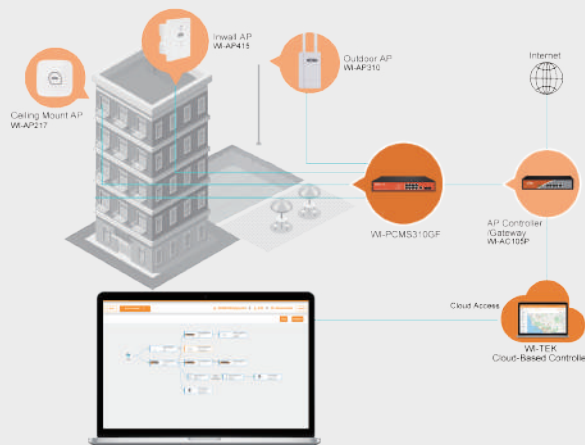


Wi-Tek cloud gateway is an intelligent network device that integrates gateway management and AC controller management, supporting Gigabit Ethernet connections on the WAN and LAN ports guaranteeing high-speed wired connections. The gateway also supports cloud management. Users can quickly complete the network-wide device deployment, configuration, remote management, operation, and maintenance, and greatly reduce the equipment cost, labor cost, and time cost of wireless network construction.

 Cloud Management

 Support SD-LAN technology

 Support Multi-VPN function



Model	WI-AC150	WI-AC105P	WI-AC108P
Interface	5*1000Mbps Ethernet ports 4 WAN ports (Default: 1 WAN port, 4 LAN ports)	5*1000Mbps Ethernet ports 4 WAN ports (Default: 1 WAN port, 4 LAN ports)	9*1000Mbps Ethernet ports (Default: 1 WAN port, 8 LAN ports)
PoE Output Port	N/A	4*802.3af/at PoE	8*802.3af/at PoE
Manage AP	150APs	32APs	64APs
Power Supply	AC:100-240V	AC:100-240V	AC:100-240V
Power Consumption	<25W	65W (With PoE load)	150W (With PoE load)

▶ 300Mbps LTE 4G Wireless Router



4G LTE: The ideal 4G LTE Router with up to 150Mbps download speed and 50Mbps upload speed and is backward compatible with 3G/4G networks.

Plug and Play: No configuration is required, plug and play, the card is automatically connected to the network, and can provide the camera with a network anytime, anywhere.

Wi-Fi Where You Need It: 4G Router offers unparalleled convenience and versatility. Whether you're working from home or remotely, just plug it in to increase field productivity and stay connected in a variety of environments.



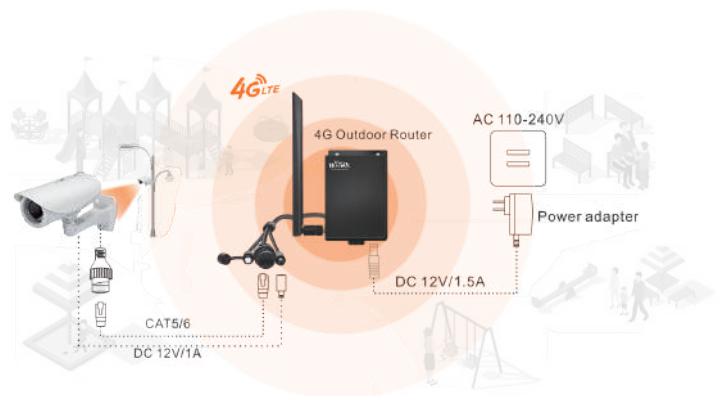
Plug and Play



300 Mbps Wireless Speed



Support PoE / 12V DC Output



Model	WI-LTE110-O	WI-LTE115-O	WI-LTE117-O	WI-LTE113-O	WI-LTE300	WI-LTE300
Hardware	V2	V1	V1	V1	V1	V2
Interface	(2)10/100M Base-T Ethernet Ports	(1)10/100M Base-T Ethernet Port	(2)10/100M Base-T Ethernet Ports	(1)10/100/1000 M Base-T Ethernet Port	(3)10/100M Base-T Ethernet Ports	(3)10/100M Base-T Ethernet Ports
Power Supply	DC IN 12V/1A or 24V Passive PoE IN	DC IN 12V/1.5A	DC IN 48-54V/2A MAX or 802.3af/at PoE IN	802.3af/at PoE or 24V Passive PoE IN	DC IN 12V/1A	DC IN 12V/1A
Antenna Gain	2dBi	5dBi	5dBi	19dBi	5dBi	5dBi
LTE Category	CAT 4	CAT 4	CAT 4	CAT 6	CAT 4	CAT 4
Waterproof	IP65	IP65	IP65	IP65	No	No
PoE/DC Output	No	(1)DC Out 12V/1A	(1-2)PoE Output	No	No	No
Cloud Management	Yes	No	Yes	Yes	No	Yes

Wireless Mesh Access Point and Router



Mesh Technology: Mesh Router uses Mesh technology to form a unified Wi-Fi network without network cables. Through fast roaming, network switching can be achieved quickly and without perception.

Easy Deployment and Cost Saving: save wiring construction costs, plug and play.

Multiple Connection Methods: Multiple Mesh Routers are wired, wireless, and mixed to form a whole mesh network.



Cloud Management



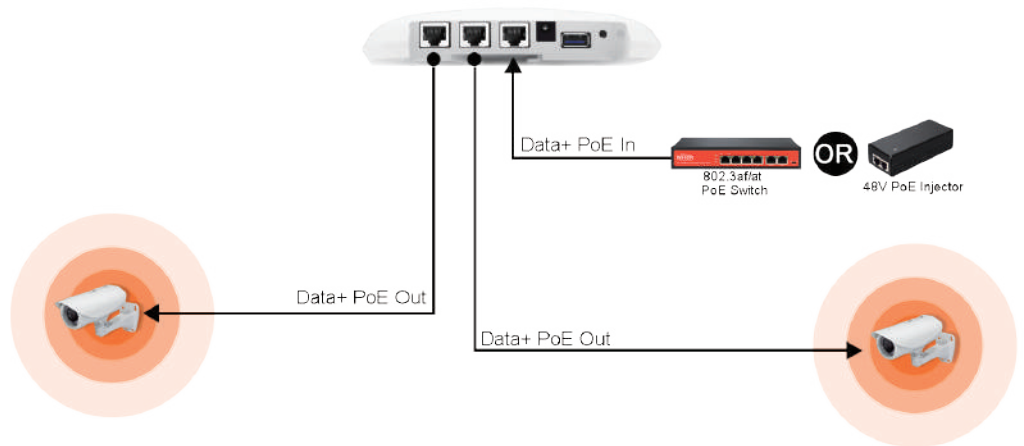
One-click Mesh Function



SD-LAN technology



PoE or DC IN Power



Model	WI-AP717MP	WI-AP718M	WI-AX1800M
Wireless Standards	IEEE 802.11 a/b/g/n/ac/ac wave2	IEEE 802.11 a/b/g/n/ac/ac wave2	IEEE 802.11 a/b/g/n/ac/ac wave2/ax
Signal Rate	Up to 300 Mbps at 2.4GHz Up to 867 Mbps at 5GHz	Up to 300 Mbps at 2.4GHz Up to 867 Mbps at 5GHz	Up to 574Mbps at 2.4GHz Up to 1201Mbps at 5GHz
Interface	(3)10/100/1000M Base-T LAN Ethernet PoE Ports	(1)10/100/1000M Base-T LAN Ethernet PoE Port	(3)10/100/1000M Base-T LAN Ethernet ports (1)10/100/1000M Base-T WAN Ethernet Port
Power Supply	802.3af/at PoE Supported; DC 12V-48V (Not Included)	802.3af/at PoE Supported	DC 12V/1.5A
Operating Mode	Router Mode and AP Mode	Router Mode and AP Mode	Router Mode

Wireless Access Point



Wi-Tek wireless AP series is designed for Wi-Fi coverage in hotels, retail stores, offices and other scenarios. 802.3 PoE support power supply, local power supply 12V DC. The dual network port design is conducive to the expansion of third-party devices and meets the needs of more networking scenarios.



Cloud Management

Fast Roaming

Qvlan binding Multi SSID

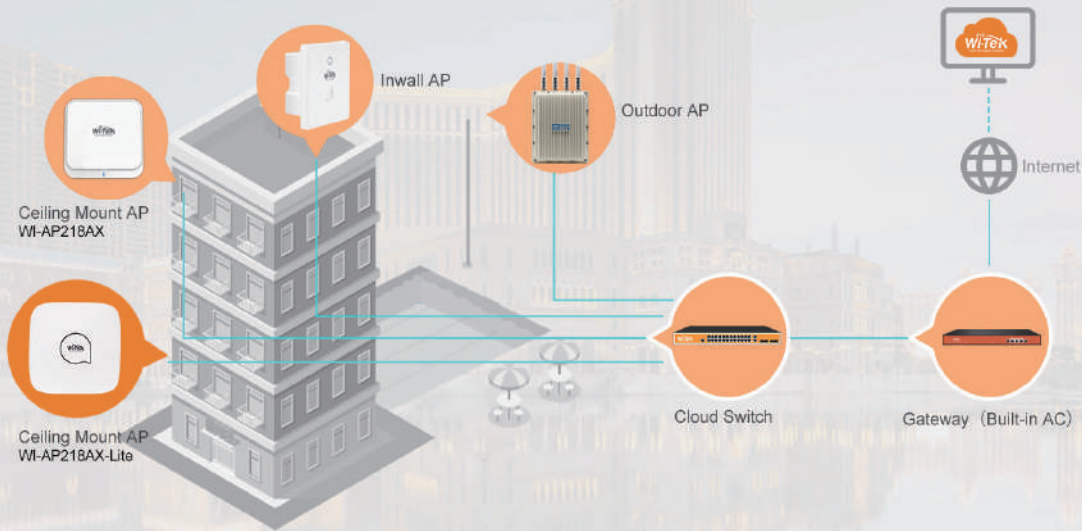
Multiple Power Supply Methods

Captive Portal Authentication



Model	WI-AP210-Lite	WI-AP210	WI-AP215	WI-AP216	WI-AP217-Lite
Wireless Standards	IEEE 802.11 a/b/g/n	IEEE 802.11 a/b/g/n	IEEE 802.11 a/b/g/n/ac	IEEE 802.11 a/b/g/n/ac/ac wave2	IEEE 802.11 a/b/g/n/ac/ac wave2
Signal Rate	Up to 300Mbps at 2.4GHz	Up to 300Mbps at 2.4GHz	Up to 300Mbps at 2.4GHz Up to 450Mbps at 5GHz	Up to 300Mbps at 2.4GHz Up to 867Mbps at 5GHz	Up to 300Mbps at 2.4GHz Up to 867Mbps at 5GHz
Interface	(2)10/100M Base-T Ethernet ports	(2)10/100M Base-T Ethernet ports	(2)10/100M Base-T Ethernet ports	(2)10/100M Base-T Ethernet ports	(2)10/100/1000M Base-T Ethernet ports
Power Supply	DC 12V/0.5A(Not Included) 802.3af PoE Supported	DC 12V/1A(Not Included) 802.3af PoE Supported	DC 12V/1.5A(Not Included) 802.3af PoE Supported	DC 12V/1A(Not Included) 802.3af PoE Supported	DC 12V/1A(Not Included) 802.3af PoE Supported
Installation Method	Indoor Ceiling Mounting	Indoor Ceiling Mounting	Indoor Ceiling Mounting	Indoor Ceiling Mounting	Indoor Ceiling Mounting
Working Mode	Fit AP, Fat AP Mode	Fit AP, Fat AP, Repeater, WISP Mode	Fit AP, Fat AP, Repeater, WISP Mode	Fit AP, Fat AP Mode	Fit AP, Fat AP Mode

Wireless Access Point



Model	WI-AP217	WI-AP218AX-Lite	WI-AP218AX	WI-AP219AX	WI-AP415
Wireless Standards	IEEE 802.11 a/b/g/n/ac/ac wave2	IEEE 802.11 a/b/g/n/ac/ac wave2/ax	IEEE 802.11 a/b/g/n/ac/ac wave2/ax	IEEE 802.11 a/b/g/n/ac/ac wave2/ax	IEEE 802.11 a/b/g/n/ac
Signal Rate	Up to 300Mbps at 2.4GHz Up to 867Mbps at 5GHz	Up to 574Mbps at 2.4GHz Up to 1201Mbps at 5GHz	Up to 574Mbps at 2.4GHz Up to 1201Mbps at 5GHz	Up to 1148Mbps at 2.4GHz Up to 2402Mbps at 5GHz	Up to 300Mbps at 2.4GHz Up to 450Mbps at 5GHz
Interface	(2)10/100/1000M Base-T Ethernet ports	(2)10/100/1000M Base-T Ethernet ports	(2)10/100/1000M Base-T Ethernet ports	(2)10/100/1000M/ 2.5G Base-T Ethernet ports	(2)10/100M Base-T Ethernet ports
Power Supply	DC 12V/1A(Not Included) 802.3af PoE Supported	DC 12V/1.5A (Not Included) 802.3af PoE Supported	DC 12V/2A(Not Included) 802.3at PoE Supported	DC 12V/2A(Not Included) 802.3at PoE Supported	802.3af PoE Supported
Installation Method	Indoor Ceiling Mounting	Indoor Ceiling Mounting	Indoor Ceiling Mounting	Indoor Ceiling Mounting	Indoor Wall Mounting
Working Mode	Fit AP, Fat AP, Repeater, WISP Mode	Fit AP, Fat AP Mode	Fit AP, Fat AP, Repeater, WISP Mode	Fit AP, Fat AP, Repeater, WISP Mode	Fit AP, Fat AP, Repeater, WISP Mode

Wireless Access Point



Model	WI-AP310-Lite	WI-AP310	WI-AP315	WI-AP316	WI-AP317
Wireless Standards	IEEE 802.11 a/b/g/n	IEEE 802.11 a/b/g/n	IEEE 802.11 a/b/g/n/ac	IEEE 802.11 a/b/g/n/ac/ac wave2	IEEE 802.11 a/b/g/n/ac/ac wave2
Signal Rate	Up to 300Mbps at 2.4GHz	Up to 300Mbps at 2.4GHz	Up to 300Mbps at 2.4GHz Up to 450Mbps at 5GHz	Up to 300Mbps at 2.4GHz Up to 867Mbps at 5GHz	Up to 300Mbps at 2.4GHz Up to 867Mbps at 5GHz
Interface	(2)10/100M Base-T Ethernet ports	(2)10/100M Base-T Ethernet ports	(2)10/100M Base-T Ethernet ports	(2)10/100M Base-T Ethernet ports	(2)10/100/1000M Base-T Ethernet ports
Power Supply	DC 12V/1A(Not Included) 24V Passive PoE (Passive PoE injector included)	DC 12V/1A(Not Included) 24V Passive PoE (Passive PoE injector included)	DC 12V/1.5A(Not Included) 802.3af PoE Supported	DC 12V/1A(Not Included) 24V Passive PoE (Passive PoE injector included)	DC 12V/2A(Not Included) 802.3at PoE Supported
Installation Method	Outdoor Pole Mounting (IP65 Waterproof)	Outdoor Pole Mounting (IP65 Waterproof)	Outdoor Pole Mounting (IP65 Waterproof)	Outdoor Pole Mounting (IP65 Waterproof)	Outdoor Pole Mounting (IP65 Waterproof)
Working Mode	Fit AP, Fat AP Mode	Fit AP, Fat AP, Repeater, WISP Mode	Fit AP, Fat AP, Repeater, WISP Mode	Fit AP, Fat AP Mode	Fit AP, Fat AP, Repeater, WISP Mode

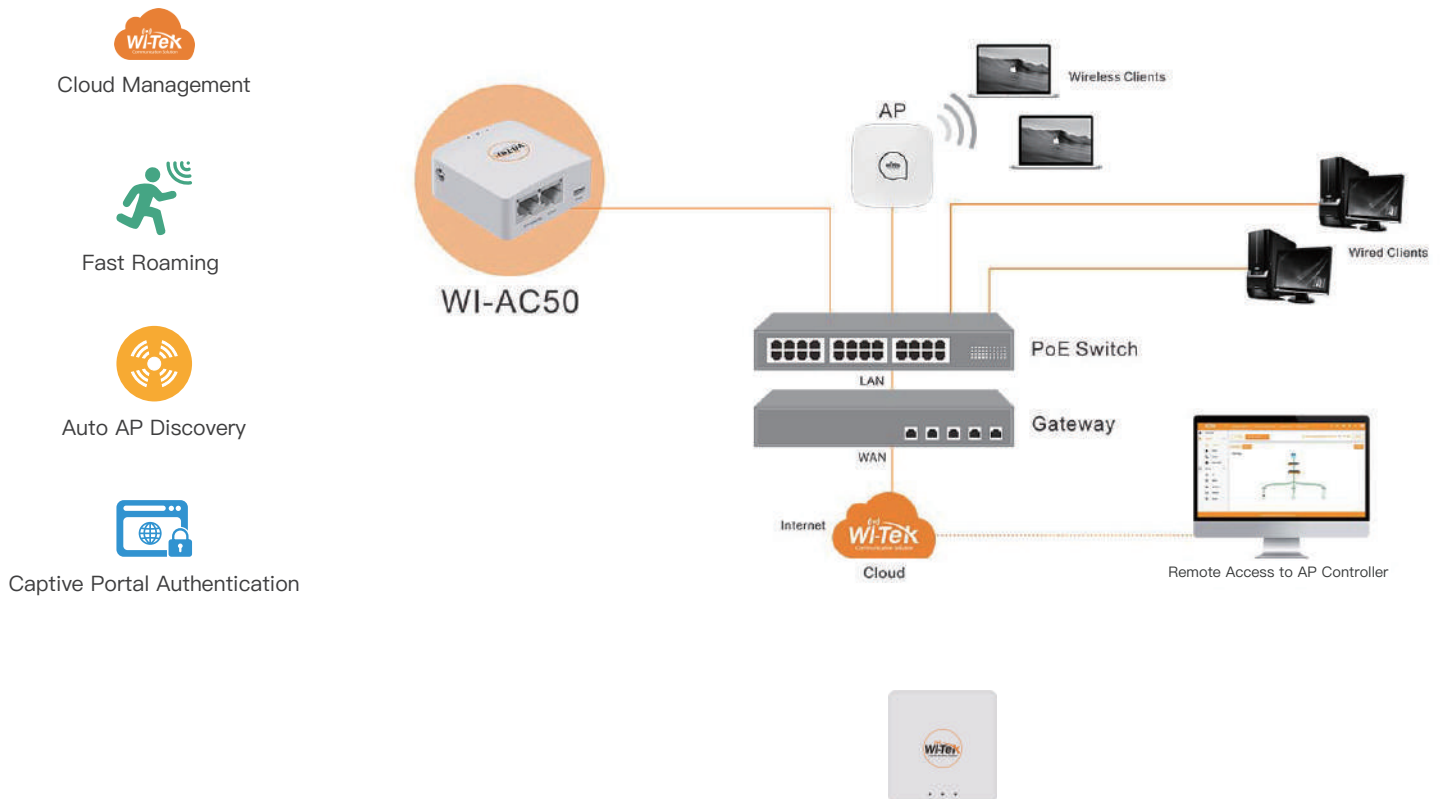


Model	WI-AP510	WI-AP518AX
Wireless Standards	IEEE 802.11 a/b/g/n/ac/ac wave2	IEEE 802.11 a/b/g/n/ac/ac wave2/ax
Signal Rate	Up to 300Mbps at 2.4GHz Up to 867Mbps at 5GHz	Up to 1148Mbps at 2.4GHz Up to 2402Mbps at 5GHz
Interface	(1)10/100/1000M Base-T Ethernet port	(1)10/100/1000M/2.5G Base-T Ethernet port
Power Supply	802.3at PoE Supported	802.3at PoE Supported
Installation Method	Outdoor Pole Mounting(IP67 Waterproof)	Outdoor Pole Mounting(IP67 Waterproof)
Working Mode	Fit AP, Fat AP, Repeater, WISP Mode	Fit AP, Fat AP, Repeater, WISP Mode

▶ Wireless Access Point Hardware Controller



WI-AC50 AP controller is designed for the premise of luxury hotels, resorts, large enterprises, shopping mall chains and so on. Rich AP management functions include centralized forwarding and distributed forwarding, automatic AP discovery, and WLAN wireless spectrum analysis. Automatic channel and power allocation, user load balancing, and a built-in captive portal server enable it to provide Wi-Fi marketing features including custom welcome and redirect pages, connected device types and user statistics.

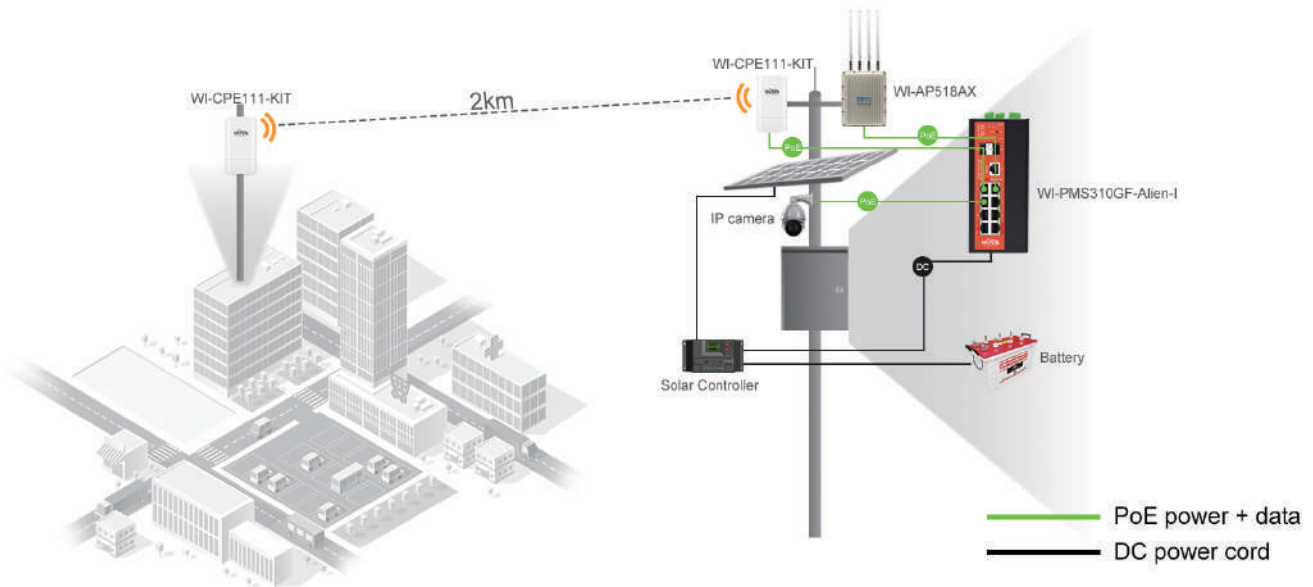


Model	WI-AC50
Interface	2* 10/100 Base-T Ethernet ports 1* 2.0 USB Port (reserved In-advance) 1* micro USB (power) 1* 2.4GHz Wireless interface
AP Unified Configuration	50APs
Power Supply	802.3af/at PoE In Micro-USB 5V 1A
Power Consumption	<2W

▶ Alien Series 24/48V WISP PoE Switch

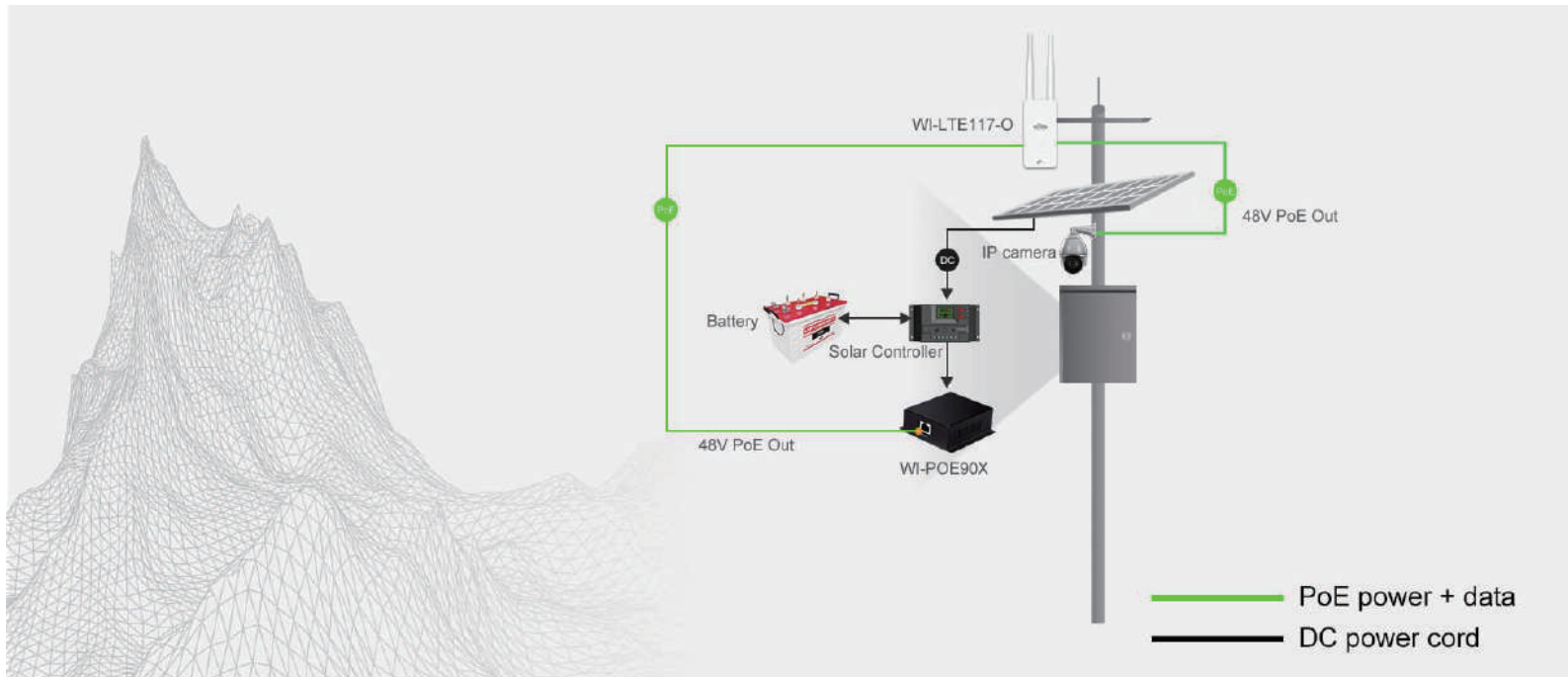


- 24V/48V Auto-detect: PoE Switch is suitable for 48V 802.3af/at and passive 24V PoE powered devices.
- Full Gigabit: Build and expand your network with Wi-Tek full gigabit PoE switch , delivering robust performance switching.
- Powerful Functionality: The L2 Managed PoE Switch uses a intelligent web page that provides basic switching features.



Model	WI-PS310GF-Alien	WI-PMS310GF-Alien	WI-PMS310GF-Alien-I V2
Interface	8*1000Mbps PoE Ports 2*1000Mbps SFP Slots	8*1000Mbps PoE Ports 2*1000Mbps SFP Slots	8*1000Mbps PoE Ports 2*1000Mbps SFP Slots
Power Budget	150W	150W	300W
PoE Port	Port 1- 8: 802.3 af/at or 24V Passive	Port 1- 8: 802.3 af/at or 24V Passive	Port 1-2: 802.3bt 60W Port 3-8: 24V Passive or 802.3af/at
L2 Management	No	Yes	Yes
Power Supply	DC 48-55V 5A Max AC 110~240V 50/60HZ	DC 48-55V 5A Max AC 110~240V 50/60HZ	DC1: 9-52V 10A Max DC2: 37-57V 8A Max DC3: 37-57V 8A Max
Working Temperature	-10°C~55°C	-10°C~55°C	-40°C~80°C

► Alien Series 24/48V WISP PoE Switch



Model	WI-PMS328GF-Alien	WI-POE90X	WI-POE61-24V
Interface	24*1000Mbps PoE Ports 4*1000Mbps Combo Ports	2*1000Mbps PoE Ports	2*1000Mbps PoE Ports
Power Budget	400W	30W	24W
PoE Port	Port 1-4: 802.3 af/at or 24V Passive Port 5-8: 802.3bt 90W Port 9-24: 802.3 af/at	PoE IN: Passive 24V PoE OUT: 802.3af/at 48V	PoE IN: 802.3af/at 48-52V PoE OUT: Passive 24V
L2 Management	Yes	No	No
Power Supply	AC 110~240V 50/60HZ	DC IN 12-57V PoE IN 24V	DC IN 36-60V PoE IN 48V
Working Temperature	-10°C~55°C	-10°C~70°C	-10°C~70°C

UPS No-Break Solar PoE Switch



Wi-Tek UPS No-Break Solar PoE Switch Serial is designed for CCTV surveillance and wireless network, including unmanaged and layer 2 managed solar PoE switches. Based on its green energy, it can be charged by the inexhaustible and natural source of energy -- solar power. It can conserve green energy economically and power the remote IP cameras and wireless AP, especially used for expansive applications such as dams, forests, deserts, national parks, and highways.



Model	WI-PS306GF-UPS	WI-PS306GF-UPS-15A	WI-PMS310GF-UPS+	WI-PS302G-UPS
Interface	5*1000Mbps PoE Ports 1*1000Mbps SFP Slot	5*1000Mbps PoE Ports 1*1000Mbps SFP Slot	8*1000Mbps PoE Ports 2*1000Mbps SFP Slots	2*1000Mbps PoE Ports (1*PoE Output)
PoE Port	Port1: 48V 60W Port2/3: 48V 30W Port4/5: 48V 30W or 24V Passive PoE 24W	Port1: 48V 60W Port2/3: 48V 30W Port4/5: 48V 30W or 24V Passive PoE 24W	Optional: 24V 24W or 48V 30W	Optional: 24V 24W or 48V 30W
Power Budget	120W	120W	150W	30W
Power Supply	12V/24V battery 12V/24V solar panel	12V/24V battery 12V/24V solar panel	12V/24V battery 12V/24V solar panel	12V battery 12V solar panel
Charge Current	5A	15A	20A	2A
L2 Management	No	No	Yes	No

Multi-Gigabit Ethernet



To meet different applications' needs, such as household storage devices and PCs, front-end wired devices require more bandwidth and better network performance. Wi-Tek launched 2.5Gbps unmanaged PoE switch, WI-PS505G and WI-PS508G. The 2.5G ports support automatic negotiation to 100M/1G/2.5G according to the PoE Powered device and provide sufficient bandwidth without any noise.



Full 2.5G Port Design



Work with Cat5e
Cat6, and above cable



Plug and play
zero configuration



Fanless, Noiseless Design



Model	WI-SG505G	WI-SG508G	WI-PS505G	WI-PS508G
Interface	5*1G/2.5G Ethernet Ports	8*1G/2.5G Ethernet Ports	4*1G/2.5G RJ45 PoE Ports 1*1G/2.5G Ethernet Port	8*1G/2.5G RJ45 PoE Ports
PoE	N/A	N/A	Port 1: 802.3bt 60W Port 2-4: 802.3af/at	Port 1: 802.3bt 60W Port 2-8: 802.3af/at
PoE Budget	N/A	N/A	65W	120W
Power Supply	100-240V DC / 0.5A	100-240V DC / 0.5A	52V DC / 1.25A	52V DC / 2.5A

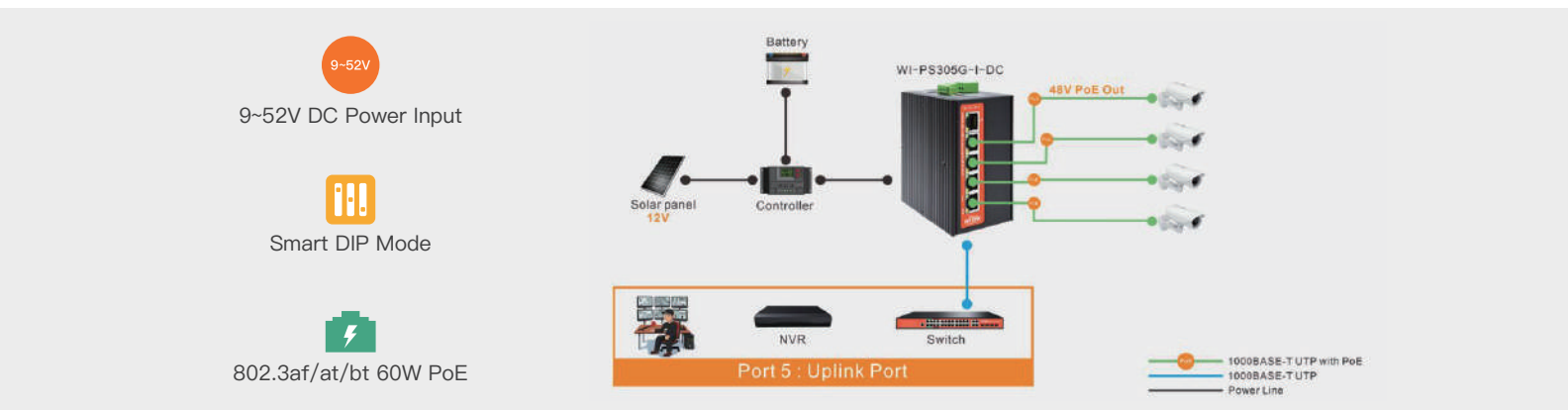


Model	WI-POE65-2.5G-30W	WI-POE65-2.5G-60W
Interface	Data input port: 1*1G/2.5G Ethernet Port Power input port: AC IN 100-240V PoE output port: 1*1G/2.5G PoE port with 802.3af/at 30W	Data input port: 1*1G/2.5G Ethernet Port Power input port: AC IN 100-240V PoE output port: 1*1G/2.5G PoE port with 802.3bt 60W

▶ Boost Voltage Industrial PoE Switch



- Boost Voltage Industrial PoE Switch is design to provide transport network solution for WISP and CCTV market.
- Support solar panel and battery power supply, provide green energy and emergency power supply solution.
- Flexible installation method, support wall mounting and DIN-Rail mounting.
- Industrial grade CPU, redundant power supply design ensure the stable operation of the project even in harsh environment.
- Wi-Tek provide industrial switches with abundant L2 management functions, such as QVLAN, QoS, ACL, IGMP Snooping, STP,ETC.



	Unmanaged Switch	L2 Managed Switch
Model	WI-PS305G-I-DC	WI-PMS310GF-Alien-I (V2)
Ports	4*10/100/1000 Base-T PoE+ RJ-45 1*10/100/1000 Base-T RJ-45	8*10/100/1000 Base-T PoE RJ-45 2*1000 Base-X SFP
PoE Standard	Ports 1-4: 802.3af/at 30W PoE	Ports 1-2: 802.3af/at/bt 60W PoE Ports 3-8: 24V Passive/48V 802.3af/at 30W PoE
DIP Mode	PoE Watchdog/Port VLAN/EX_1-2/EX_1-4	No
Power Input Voltage	DC 9~52V	
Surge Immunity	6kV	
Operating Temperature	-40°C~80°C	

▶ 24V/48V Mixed Industrial PoE Switch



- 24V/48V mixed industrial PoE switch is design to provide transport network solution for WISP and CCTV market.
- Products are designed for automatically identify different PoE powered requirements, compatible with all 24V or 48V PoE Devices, a one-time investment to meet various business requirement.
- Flexible installation method, support wall mounting and DIN-Rail mounting.
- Industrial grade CPU, redundant power supply design ensure the stable operation of the project even in harsh environment.

24/48v

24/48V PoE



802.3af/at/bt 60W PoE



Smart DIP Mode



	Unmanaged Switch		L2 Managed Switch		
Model	WI-PS306GF-I (V2)	WI-PS310GF-I (V2)	WI-PMS305GF- I	WI-PMS306GF-I	WI-PMS312GF-I (V2)
Ports	4*1000Mbps PoE 2*1000 Mbps SFP	8*1000Mbps PoE 2*1000Mbp Combo	4*1000Mbps PoE Out 1*1000Mbps SFP 1*1000Mbps PoE In	4*1000Mbps PoE 2*1000Mbps SFP	8*1000Mbps PoE 4*1000Mbps SFP
PoE	Ports 1-2 : 24V Passive/48V 802.3 af/at PoE 30W Ports 3-4: 802.3 af/at/bt PoE 60W	Ports 1-2 : 24V Passive/48V 802.3 af/at PoE 30W Ports 3-4: 802.3 af/at/bt PoE 60W Ports 5-8: 802.3 af/at PoE 30W	Ports 1-2 : 24V Passive/48V 802.3 af/at PoE 30W Ports 3-4: 802.3 af/at/bt PoE 60W Port 5: 802.3af/at/bt 60W PoE Input	Ports 1-2 : 24V Passive/48V 802.3 af/at PoE 30W Ports 3-4: 802.3 af/at/bt PoE 60W	Ports 1-2 : 24V Passive/48V 802.3 af/at PoE 30W Ports 3-4: 802.3 af/at/bt PoE 60W Ports 5-8: 802.3 af/at PoE 30W
DIP Mode	VLAN Extend PoE Watchdog Fiber Watchdog	Extend PoE Watchdog 24/48V Switch (Port 1) 24/48V Switch (Port 2)	No		
Surge Immunity	6kV				
Operating Temperature	-40°C~80°C				

▶ Cloud L2 Managed Industrial Switch



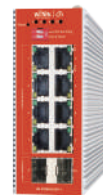
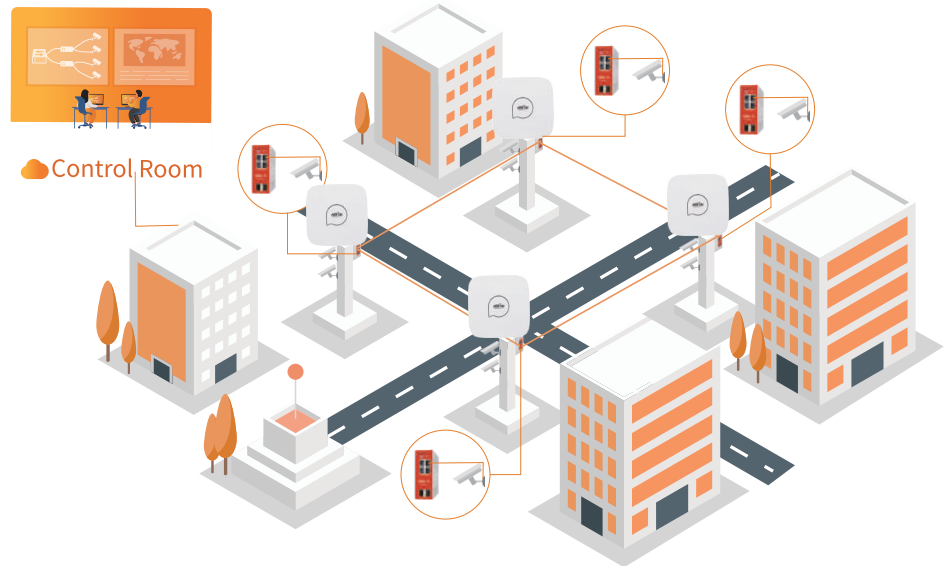
- Cloud L2 Management Industrial switch can work with Wi-Tek cloud platform, makes it can be easily and remotely managed.
- Flexible installation method, support wall mounting and DIN-Rail mounting.
- Industrial grade CPU, redundant power supply design ensure the stable operation of the project even in harsh environment.
- Wi-Tek provide industrial switches with abundant L2 management functions, such as QVLAN, QoS, ACL, IGMP Snooping, STP,ETC.



Smart DIP Mode



802.3af/at 30W PoE



Model	WI-PCMS306GF-I	WI-PCMS310GF-I
Ports	4*10/100/1000 Base-T PoE+ RJ-45 2*1000 Base-X SFP	8*10/100/1000 Base-T PoE+ RJ-45 2*1000 Base-X SFP
Cloud Management	Yes	Yes
DIP Mode	Fast Ring/SCP	Fast Ring/SCP
Surge Immunity	6kV	
Operating Temperature	-40°C~75°C	

▶ Hardened PoE Switch



- Hardened PoE switch is design to provide transport network solution for wireless coverage and CCTV market.
- $-30^{\circ}\text{C}\sim 65^{\circ}\text{C}$ working temperature, meet the most requirement of project site environment.
- Flexible installation method, support wall mounting and DIN-Rail mounting.
- It support 802.3af/at/bt 90W PoE, can meet the requirement of high power compliant devices, such as PTZ speed dome, high power wireless access point.



$-30\sim 65^{\circ}\text{C}$

Working Temperature



802.3af/at/bt 60W PoE



Smart DIP Mode



Model	WI-PS206GF-I	WI-PS212GF-I	WI-PS206-I	WI-PS208-I
Ports	4*10/100 Base-T PoE RJ-45 1*1000 Base-X SFP 1*10/100/1000 Base-T RJ-45	8*10/100 Base-T PoE RJ-45 2*1000 Base-X SFP 2*10/100/1000 Base-T RJ-45	4*10/100 Base-T PoE RJ-45 2*10/100 Base-T RJ-45	8*10/100 Base-T PoE RJ-45
PoE	Ports 1-4: 802.3 af/at PoE 30W	Ports 1-8 : 802.3 af/at PoE 30W	Ports 1: 802.3 af/at/bt PoE 90W Ports 2-4: 802.3 af/at PoE 30W	Ports 1-2: 802.3 af/at/bt PoE 90W Ports 3-8: 802.3 af/at PoE 30W
DIP Mode	250m/VLAN/ Watchdog/Priority		Watchdog/EX_1 -2/EX_1-4/VLAN	Watchdog/EX_1 -4/EX_1-6/VLAN
Surge Immunity	6kV			
Operating Temperature	$-30^{\circ}\text{C}\sim 65^{\circ}\text{C}$			

▶ IP68 Industrial PoE Extender/Injector/Splitter



Wi-Tek industrial accessories including PoE Extender, PoE Injector, and PoE Splitter, provide a simple solution for adding PoE ports without running more cabling and achieving more flexible network applications without requiring an external power adapter. All of them come with IP68 Waterproof make it can work in harsh outdoor environment.



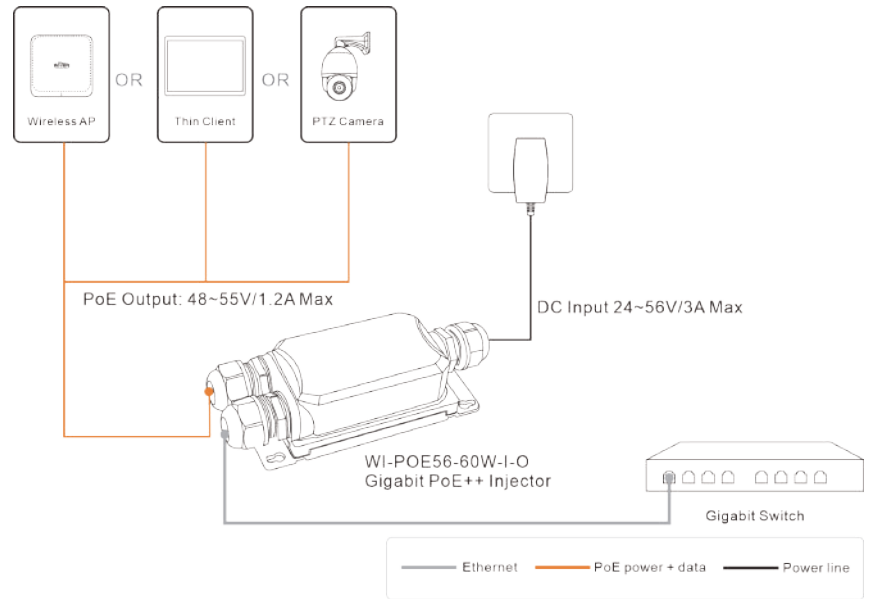
IP68 Waterproof Enclosure



-40°C~80°C Working Temperature



Plug and Play



Model	WI-POE21E-O	WI-POE22E-O	WI-POE56-60W-O	WI-POE56S-BT-I-O
Product	PoE Extender	PoE Extender	PoE Injector	PoE Splitter
Interface	PoE in port: 1*1000Mbps PoE port with 802.3bt 60W PoE output port: 2*1000Mbps PoE port with 802.3af/at 30W	PoE in port: 1*1000Mbps PoE port with 802.3bt 90W PoE output port: 1*1000Mbps PoE port with 802.3af/at 30W 1*1000Mbps PoE port with 802.3af/at 60W	Data input port: 1*1000Mbps Ethernet port Power input port: 24~56V/3A Max PoE output port: 1*1000Mbps PoE port with 802.3bt 60W	PoE in port: 1*1000Mbps PoE port with 802.3bt 95W Data output port: 1*1000Mbps Ethernet port DC output port: 12V/5A Max
Waterproof	IP68	IP68	IP68	IP68

▶ PoE Injector/ PoE Splitter



Wi-Tek Power over Ethernet injectors and splitters provides different power and high-speed Ethernet data connection anywhere in your network infrastructure. Some of them come with industrial chipsets that can work at $-40^{\circ}\text{C} \sim 80^{\circ}\text{C}$ harsh environments. Wi-Tek PoE injectors are protected by a high-quality metal shell to ensure a long service life. They have passed a series of strict tests and provide you with reliable performance.



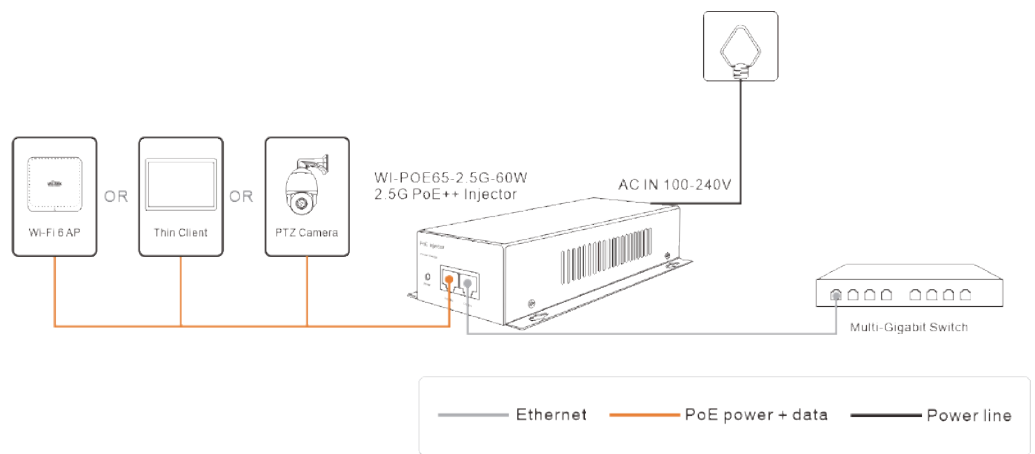
Convert non-PoE to PoE



Support desktop/wall-Mount

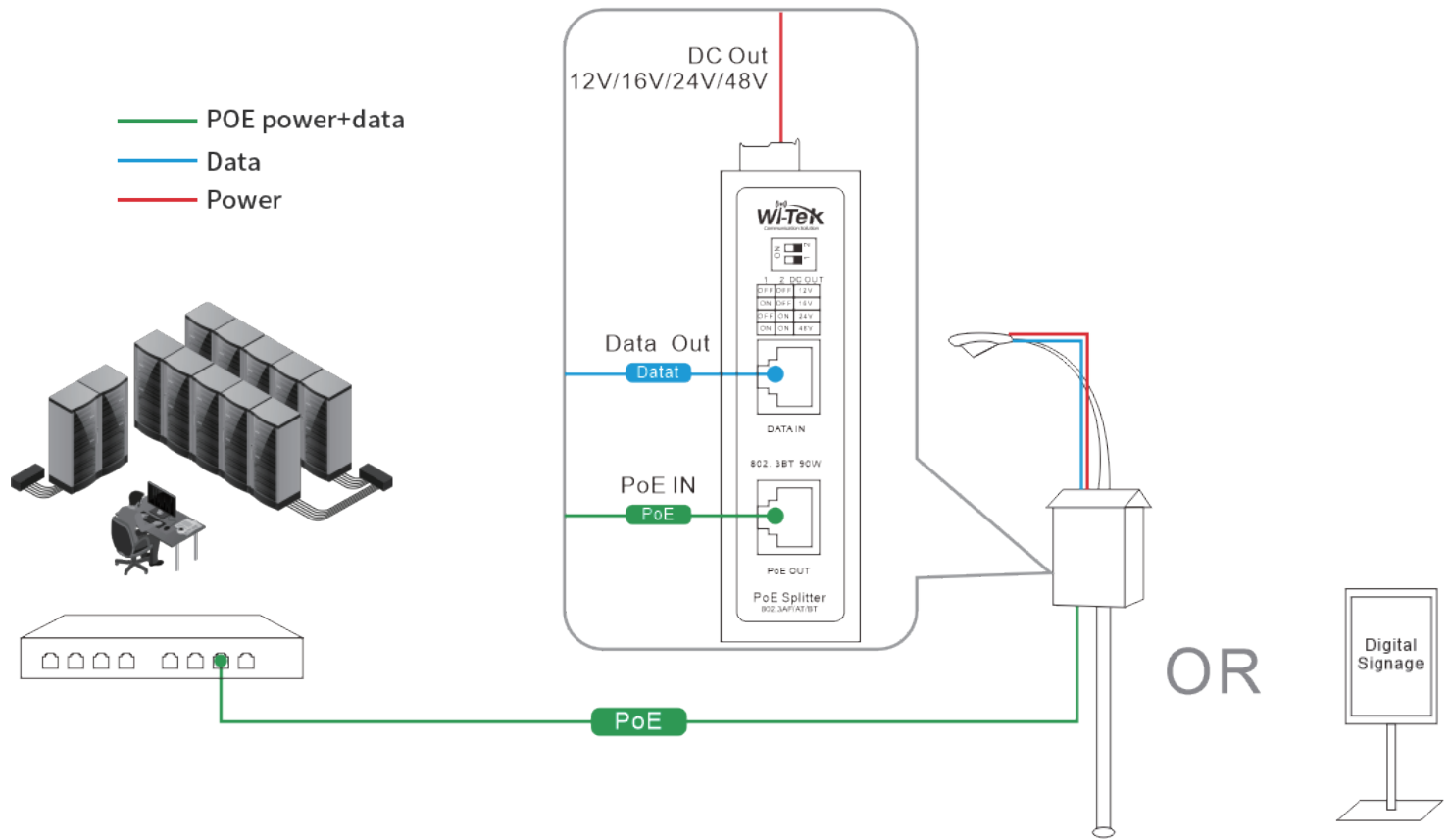


Plug and play installation



Model	WI-POE31-48V	WI-POE51-48V	WI-POE31-24V	WI-POE51-24V
Interface	1*10/100Mbps PoE RJ45 Port 1*10/100Mbps Ethernet Port	1*100/1000Mbps PoE RJ45 Port 1*100/1000Mbps Ethernet Port	1*10/100Mbps PoE RJ45 Port 1*10/100Mbps Ethernet Port	1*100/1000Mbps PoE RJ45 Port 1*100/1000Mbps Ethernet Port
Power Supply	AC IN 100-240V	AC IN 100-240V	AC IN 100-240V	AC IN 100-240V
Data In/Out	1*10/100Mbps Data In	1*10/1000Mbps Data In	1*10/100Mbps Data In	1*10/1000Mbps Data In
Power In/Out Port	1*802.3af/at PoE Out	1*802.3af/at PoE Out	1*24V Passive PoE Out	1*24V Passive PoE Out
PoE Consumption	48V 24W	48V 24W	24V 24W	24V 24W
Working Temperature	$-10^{\circ}\text{C} \sim 55^{\circ}\text{C}$	$-10^{\circ}\text{C} \sim 55^{\circ}\text{C}$	$-10^{\circ}\text{C} \sim 55^{\circ}\text{C}$	$-10^{\circ}\text{C} \sim 55^{\circ}\text{C}$

► PoE Injector/PoE Splitter



Model	WI-POE55-48V-60W	WI-POE58-BT	WI-POE58-BT-I-DC	WI-POE55S-BT-I-DC	WI-POE11S-48V
Interface	1*100/1000Mbps PoE RJ45 Port 1*100/1000Mbps Ethernet Port	1*100/1000Mbps PoE RJ45 Port 1*100/1000Mbps Ethernet Port	1*100/1000Mbps PoE RJ45 Port 1*100/1000Mbps Ethernet Port	1*100/1000Mbps PoE RJ45 Port 1*100/1000Mbps Ethernet Port	1*100/1000Mbps PoE RJ45 Port 1*100/1000Mbps Ethernet Port
Power Supply	AC IN 100-240V	AC IN 100-240V	DC IN 12-57V	48-55V PoE IN	48V PoE IN
Data In/Out	1*10/1000Mbps Data In	1*10/1000Mbps Data In	1*100/1000Mbps Data In	1*100/1000Mbps Data Out	1*100/1000Mbps Data Out
Power In/Out Port	1*802.3 af/at/bt 60W PoE Out	1*802.3 af/at/bt 90W PoE Out	1*802.3 af/at/bt 90W PoE Out	12V/16V/24V/48V DC Out	12V DC Out
PoE Consumption	52V 60W	52V 90W	52V 90W	52V 90W	48V 24W
Working Temperature	-10°C~55°C	-10°C~55°C	-40°C~80°C	-40°C~80°C	-10°C~55°C

PoE Extender



Wi-Tek PoE Extender can extend both the Ethernet Data and power over Ethernet transmission distance over 100m. We provide not only indoor PoE injectors, but also outdoor PoE injectors with IP65 waterproof to guarantee stable and reliable performance even in harsh environments. Some of them come with 250 meter long distances via Extend Mode. Some of the down-link ports are isolated from each other but can communicate with uplink ports via VLAN Mode.



Extend your network up to 650m



Dual power supplies for your options



Plug and play



Model	WI-PE31E	WI-PE31G	WI-PE51E	WI-PE51G	WI-PE41E-O
Interface	PoE in port: 1*100Mbps PoE port with 802.3af/at 30W DC input port: 48-55V PoE output port: 2*100Mbps PoE port with 802.3af/at 30W	PoE in port: 1*1000Mbps PoE port with 802.3af/at 30W DC input port: 48-55V PoE output port: 2*1000Mbps PoE port with 802.3af/at 30W	PoE in port: 1*100Mbps PoE port with 802.3bt 60W DC input port: 48-55V PoE output port: 4*100Mbps PoE port with 802.3af/at 30W 1*100Mbps PoE port	PoE in port: 1*1000Mbps PoE port with 802.3bt 90W DC input port: 48-55V PoE output port: 4*1000Mbps PoE port with 802.3af/at 30W	PoE in port: 1*100Mbps PoE port with 802.3bt 60W DC input port: 48-52V PoE output port: 3*100Mbps PoE port with 802.3at/af 30W
Long Distance	250 meters	250 meters	250 meters	250 meters	250 meters
Waterproof	N/A	N/A	N/A	N/A	IP65



Technical Support



Cloud Management



Company Websit



Wireless-Tek Technology Limited

Address: Biaofang Technology Building 402, Bao'an street,
Baoan District, Shenzhen City, Guangdong, China

Website:www.wireless-tek.com

Email:sales@wireless-tek.com

Technical Support:tech@wireless-tek.com